



ENTERPRISE SUITE

The Advanced & Predictive Analytics Platform for SMEs & Large Companies Across All Industries

Consolidated, accurate and auditable insights and business reporting that will unlock opportunity.

COSOL's Enterprise Advanced & AI Analytics Suite is a comprehensive platform designed to empower business departments with advanced analytics, predictive insights, and robust reporting capabilities, enabling smarter decision-making. In addition to our core Enterprise Suite, we offer industry-specific analytic dashboards and insights tailored for Agriculture, Meat Processing, FMCG, Sporting Clubs, and Membership Organisations. We also have a dedicated Transport Suite, a standalone solution.

Automated Analytics and Reporting for Departments



Finance Hub
For CFOs & Finance Teams



Asset & Maintenance Hub



People Hub
For CoS & HR Teams



Supply Chain Hub
For COOs & Supply Chain Teams



Sales & Marketing Hub
For CSOs, CMOs, & Marketing & Sales Teams



Executive Hub
For Executive Management & Boards





Finance Hub

Tailored for CFOs and finance teams, this hub facilitates financial management by providing insights into its financial data, forecasting future trends, and supporting budgetary compliance.

Finance & Business Operations

Profit & Loss

Expense Management & Reduction

Labour Productivity, Costs & Absenteeism

Capital Expenditure (CapEx)

Asset Lifecycle Management & Depreciation

Balance Sheet

Budgeting & Forecasting

Inventory Management

Operations Efficiency

Predictive People Analytics

Liquidity & Cash Management

Cash Flow Analysis & Prediction

Debtors & Creditors Management

Currency Management & Hedging

Tax, Audit & Risk

Tax Planning & Optimisation

Risk Management & Compliance

Financial Health & Ratios

Revenue & Pricing

Revenue Growth

Profitability by Customer, Brand & Product

Daily Turnover Analysis

Strategic Planning

Strategic Planning & Forecasting

Predict - Scenario Modelling

Investment & Portfolio

Sustainability Suite (Finance & ESG)

Mergers & Acquisitions





People Hub

Designed for Chiefs of Staff (CoS) and HR teams, the People Analytics Hub consolidates all your people data into a single platform, providing clear and accurate insights into your workforce and organisation. This solution automates reporting processes, empowering you to leverage data-driven insights for effective HR strategy and management throughout the entire employee lifecycle.

Talent Acquisition & Workforce Planning

Talent Sourcing & Acquisition

Workforce & Succession Planning

Predictive People Analytics (RetainTalent)

Recruitment Campaign Analysis

Departures, Staff Turnover & Exit Interviews

Payroll, Performance & Development

Staff Performance & Profitability

Learning, Development & Mentoring

Payroll, Super, Leave & Absenteeism

Culture & Wellbeing

Employee Wellness, Health & Safety

Employee Engagement, Experience & Culture

Organisation Health Check (eNPS, surveys)

HR Strategy

Predictive Scenario Modelling

Diversity, Equity & Inclusion (ESG Impact)

People Analytics KPIs & Metrics



IS 837459



Sales & Marketing Hub

Designed for Chief Sales Officers (CSOs), Chief Marketing Officers (CMOs), and marketing and sales teams, this hub analyses market trends and behaviours, tracks sales performance, and the effectiveness of marketing initiatives.

Marketing Insights & Reporting

Customer Churn & Predictive Customer Retention

Brand Equity & Growth

Customer Journey & Behaviour

Customer Profile, Performance & Profitability

Marketing Campaign Analysis

Trade Promotion

Marketing KPIs & Metrics

Product & Brand Performance, Profitability, Inventory Risk

Channel Performance & Attribution

Market Research

Sales Insights & Reporting

Daily Sales & Activity

Sales Team & Individual Performance

Sales KPIs & Metrics

Sales Against Target & Budget

Lead & Opportunity Tracking

Predict - Sales Forecasting



IS 837459



Asset & Maintenance Hub

For Chief Operating Officers (COOs) and operations teams, this analytics hub monitors asset conditions, anticipates maintenance needs, and minimises the risk of costly operational disruptions.

Asset Performance & Maintenance



Finance & Strategy



Vendor & Workforce Performance



IS 837459



Supply Chain Hub

Supporting COOs and supply chain teams, the Supply Chain Hub optimises inventory management, streamlines delivery processes, and forecasts demand to ensure product availability.

Supply Chain Performance

- Product Availability & Utilisation
- Supplier Performance
- Cost-to-Serve
- Product Performance & Profitability
- Order Fulfilment

Inventory Management

- Inventory
- Procurement & Purchasing
- Warehouse & Distribution Centre Performance
- Product Lifecycle Management

Demand Planning & Forecasting

- Predict - Demand Forecasting
- Logistics & Transportation
- Customer Satisfaction & Service Level

Risk Management & Sustainability

- Supply Chain Risk Management
- ESG Sustainability Suite (Operations & Asset maintenance Module)
- Predictive People Analytics (RetainTalent)

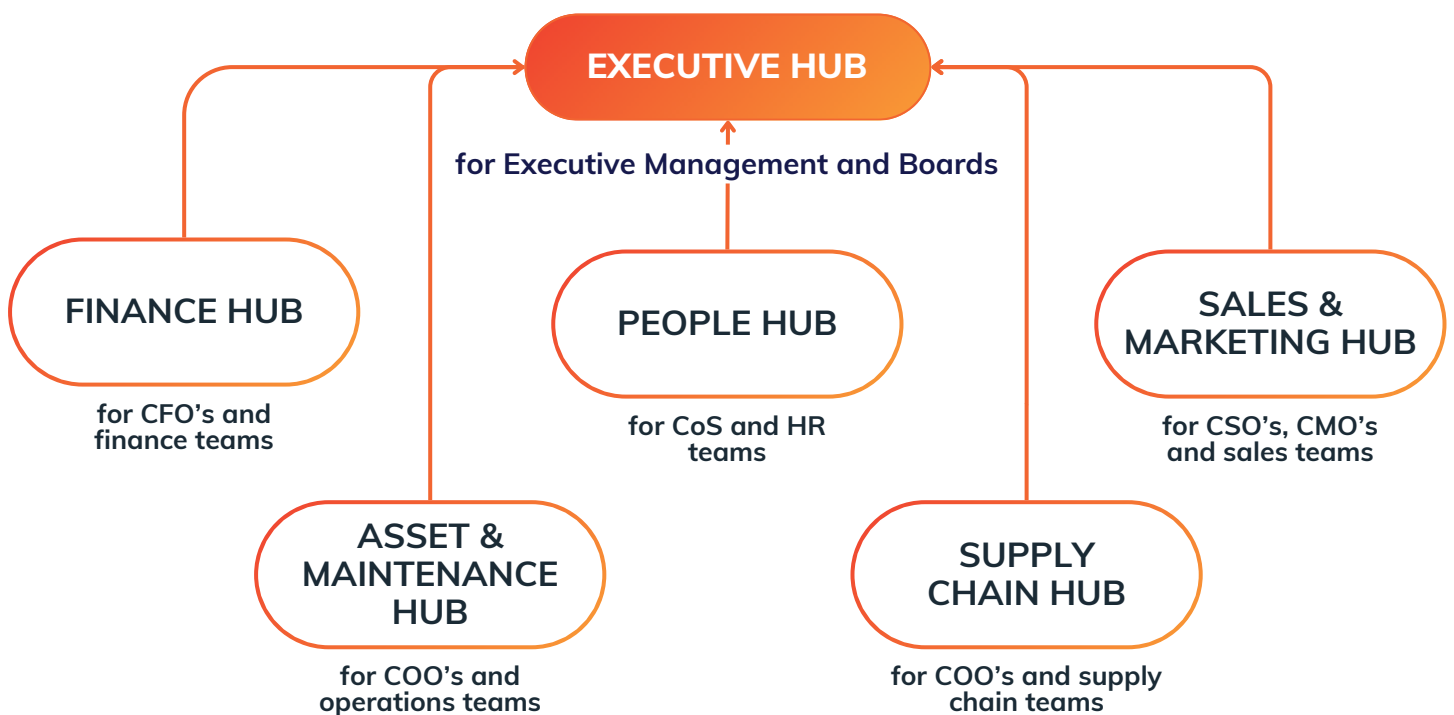




Executive Hub

The Executive Hub serves as a powerful decision support tool tailored for executives and board members, offering an executive overview of their organisation's activities. This tool facilitates swift, informed decision-making and enables confident communication with stakeholders.

Integrated with Finance, People, Sales & Marketing, Supply Chain and Asset & Maintenance decision support hubs, its high-level dashboard offers bespoke reporting and real-time analytics aligned with the specific business objectives of your organisation.



COSOL ENTERPRISE ADVANCED & AI ANALYTICS SUITE

The Advanced & Predictive Analytics Platform for SMEs & Large Companies Across All Industries

COSOL: When Reliability Matters

✉ connect@cosol.global cosol.global [in COSOL](https://www.linkedin.com/company/cosol)

📍 APAC (Brisbane, Sydney, Melbourne, Perth) | Americas (Denver)



IS 837459