



FINE GRAINED ACCESS CONTROL FOR ARC GIS

One web service. Many views.

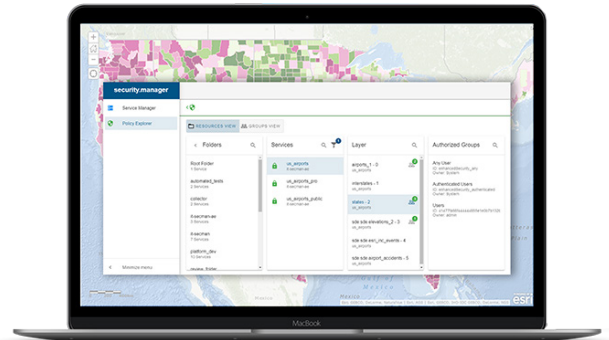
To deliver personalised experiences online that today's workplaces demand without compromising sensitive data or competitive advantage, many GIS administrators resort to publishing a dedicated service for each different group of users. This not only consumes valuable time and resources, it is also difficult to maintain.

con terra security.manager is an off-the-shelf product that delivers fine-grained access control for ArcGIS web service data. Multiple web services are replaced with one web service displayed in multiple ways.

Keep your organisation in control of what GIS users can see and do.

With security.manager organisations can control each user's access to services, right down to spatial, feature and field level. From the one web service each user accesses only the information they need based on their role and the user rights assigned to them.

For example, while the reliability engineer may need to see all assets of a certain class to compare performance, an external maintenance contractor will only need to see which of those assets within a defined area have preventive maintenance work orders assigned.



BENEFITS OF SECURITY.MANAGER



Single source - multiple views

Control the data/network security risks in publishing GIS services to internal or external users through a multi-view, single web service.



Less admin - more map making

Reduce the time and complexity and overhead of publishing and maintaining web services.



Extended security policies into the GIS tier

Align the ArcGIS Platform with your corporate IT security and leverage user accounts from general user management systems.



Assign role-driven access

Easily define individual access permissions to sensitive geo-information as part of the natural publishing workflow.



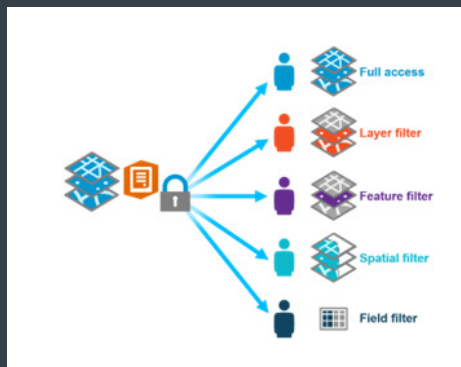
Without security.manager, we would still keep our geodata in the closet and inaccessible. security.manager opens up complete new possibilities to offer GIS-based web services controlling access precisely for users with different permissions.

SECURITY.MANAGER'S RIGHTS-BASED ACCESS

Integrating directly within ArcGIS Enterprise, security.manager ensures a common approach to security and access rights to location data.

security.manager provides a holistic security approach together with a consistent user experience. This means users will not see or receive information about content that they are not entitled to view.

Additionally, permissions to access various information needs to be explicitly expressed. Information that is not explicitly 'allowed' will be automatically forbidden and hidden from view, ensuring that access cannot be accidentally granted.



HOW TO GET STARTED

COSOL offers a 45 day pilot project of security.manager allowing organisations to evaluate the solution in their own environment in a controlled and secure way - with minimal disruption to the systems or teams.

A pilot project helps organisations validate their choices by targeting key work processes, identifying risk, and informing implementation estimates and task sequencing of a full implementation.

EXCLUSIVE DISTRIBUTORS:

COSOL is con terra's exclusive distributors and implementation partners in the Asia Pacific region.

con•terra

OUR PARTNERS:

COSOL is Certified IBM Business Partners



Ask us about establishing a security.manager pilot project in your organisation.

LEVERAGE OUR EXPERTISE

We are a global leader in digital transformation and data exploitation with more than 20 years' experience partnering with asset intensive organisations.

In 2021, we acquired Clarita Solutions - a leading asset management system integration consultancy who specialise in building and optimising asset information ecosystems for asset intensive organisations. In 2022, Work Management Solutions joined the group bringing expertise in physical asset management through asset management consulting and contract resources.

Together as COSOL, we have the technical expertise, industry knowledge and global experience to deliver best-of-breed solutions that drive quantifiable business improvements for asset intensive organisations worldwide.

**To learn more contact COSOL Asia Pacific:
Email.enquiries@cosol.global or visit [cosol.global/contact-us](https://www.cosol.global/contact-us)**

COSOL Asia Pacific: Level 1/490 Adelaide Street, Brisbane Qld 4000 Australia

COSOL OFFICES

- Brisbane, Australia
- Perth, Australia
- Denver, Colorado, USA

COSOL Ltd is an ASX-listed company.
[Learn more at www.cosol.global](https://www.cosol.global)

