



EXTEND YOUR CAPABILITIES WITH BIM & GIS

Whether you're constructing or back modeling, BIM and GIS can improve asset handover and enhance your maintenance repair operations.

Building Information Modeling (BIM) and Geographic Information Systems (GIS) are two key tools that support all phases of a project from planning, designing, construction, to operation and maintenance.

Visualize your assets in 3D models

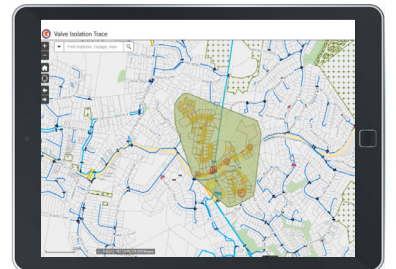
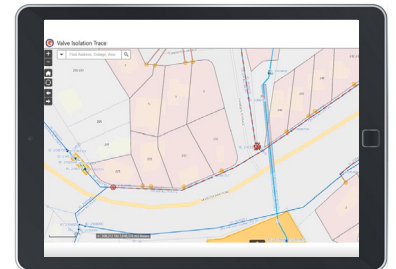
BIM provides detailed information about buildings and infrastructure assets and delivers a 3D representation of its physical and functional characteristics and extensive data about associated components.

Together with our strategic partners, we can extend your organizations capabilities with bi-directional integration of BIM into IBM Maximo.



Have spatial context of locations, assets, work orders, and service requests

GIS provides a framework for gathering, integrating, managing, analyzing, and visualizing geospatial data. Using maps and 3D scenes, GIS reveals deeper insights through patterns and spatial relationships. Organizations can use GIS to help manage assets dispersed over a large area or within complex inter-connected networks.



BIM & GIS integrated into IBM Maximo can help organizations make better informed and more effective decisions about the operation and maintenance of assets.

Together with our strategic partners including DBM Vircon, Esri and Safe Software, we are uniquely positioned to extend our clients capabilities with BIM and GIS.



INDUSTRIES WE WORK WITH:



Mining & Resources



Transport



Public Infrastructure



Utilities



Government



Construction & Engineering

OUR EXPERTISE IN SPATIAL & LOCATION



We help a range of organizations across diverse asset-intensive industries to leverage the capability of BIM & GIS integrated with IBM Maximo.

HOW OUR CLIENTS ARE LEVERAGING BIM & GIS



Reducing reliance on drawings or spreadsheets for location data

An engineering company have automated the synchronization of BIM to IBM Maximo, creating locations and assets directly into IBM Maximo from federated BIM models. When model elements are retired and replaced, IBM Maximo is updated to reflect the changes.



Automated creation and numbering of assets in IBM Maximo

A local water utility are using local engineering design standards to import linear assets into GIS which triggers the creation and numbering of assets in IBM Maximo.



Visualizing assets to better understand performance

A state-based parks authority are visualizing works across the regions via an Operations Dashboard. Works are displayed as counts on a heatmap and viewed at macro or micro levels using zoom functions.

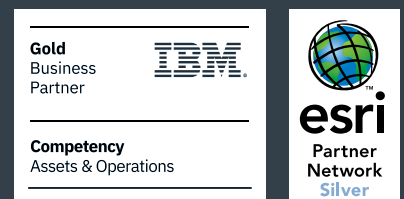


Improving dispatch of resources

A state-based water utility uses a map view of emerging reactive works and the GPS location of available crews. The operations team can assess and allocate jobs to the right crew based on their proximity and availability.

CERTIFIED PARTNERS OF:

Clarita Solutions (a COSOL Company) are certified IBM Gold Business Partners



STRATEGIC PARTNERS:



Ask about our establishing a **BIM Pilot Project** in your organization or **download our factsheet**.

LEVERAGE OUR EXPERTISE

We are a global leader in digital transformation and data exploitation with more than 20 years' experience partnering with asset intensive organizations.

In 2020, we acquired a leading North American provider of managed services, hosting and application support for asset intensive industries (formerly AddOns, Inc). In 2021, Clarita Solutions joined COSOL, bringing asset management system implementation expertise to the group. As certified IBM Gold Partners, Clarita are our IBM Maximo implementation specialists.

Together as COSOL, we have the technical expertise, industry knowledge and global experience to deliver best-of-breed solutions that drive quantifiable business improvements for asset intensive organizations worldwide.

Connect with our team at MaximoWorld on 'Tower #12' or www.cosol.global/maximoworld

THE COSOL GROUP

- [COSOL North America](#)
- [COSOL Asia Pacific](#)
- [Clarita Solutions](#)
- [Work Management Solutions](#)

COSOL Ltd is an ASX-listed company. Learn more at www.cosol.global

